

# FSF - Floating Fountain Skimmer



700 GPH, Decorative

## Floating Fountain Skimmer

Instructions for Operation • Safety • Warranty



Thank you for purchasing the EasyPro Floating Fountain Skimmer. This surface skimming fountain will help to keep a small pond clean of surface debris while providing a decorative fountain. A small submersible pump draws water from the surface, down through a removable strainer basket and foam filter pad. The water is then returned up through the fountain nozzle. The pump, skimmer and fountain are supported by three small plastic floats. Each float can be covered by a removable lily pad/flower for increased beauty. You may use this product as only a skimmer or a skimmer and fountain.



## Safety and Electrical Connections

1. **Always disconnect the electrical supply before handling, maintaining, repairing or installing any pond equipment.**
2. Connect this product only to a 110 volt receptacle that is protected by a Ground Fault Circuit Interrupter. (GFCI)
3. The pump must be fully submersed underwater at all times when operating.
4. Never let the pump run dry, as this can damage the impeller, over heat the pump and possibly burn out the pump.
5. Do not use this product in bathrooms or swimming pools.
6. All electrical work must be performed by a qualified technician. Always follow the National Electrical Code (NEC) or the Canadian Electrical Code as well as all local, state and provincial codes. Code questions should be directed to your local electrical inspector. Failure to follow electrical codes and OSHA safety standards may result in personal injury or equipment damage. Failure to follow manufacturer's installation instructions may result in electrical shock, fire hazard, personal injury or death, damaged equipment, provide unsatisfactory performance and may void manufacturer's warranty.

## Troubleshooting

If the pump fails to operate, please check the following before contacting EasyPro:

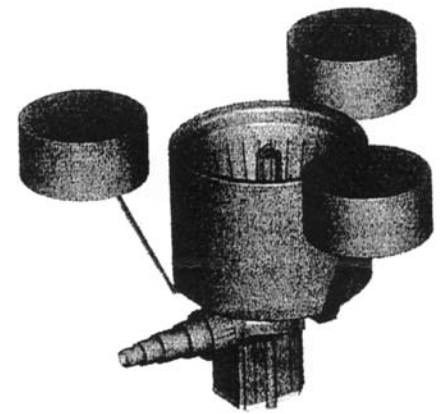
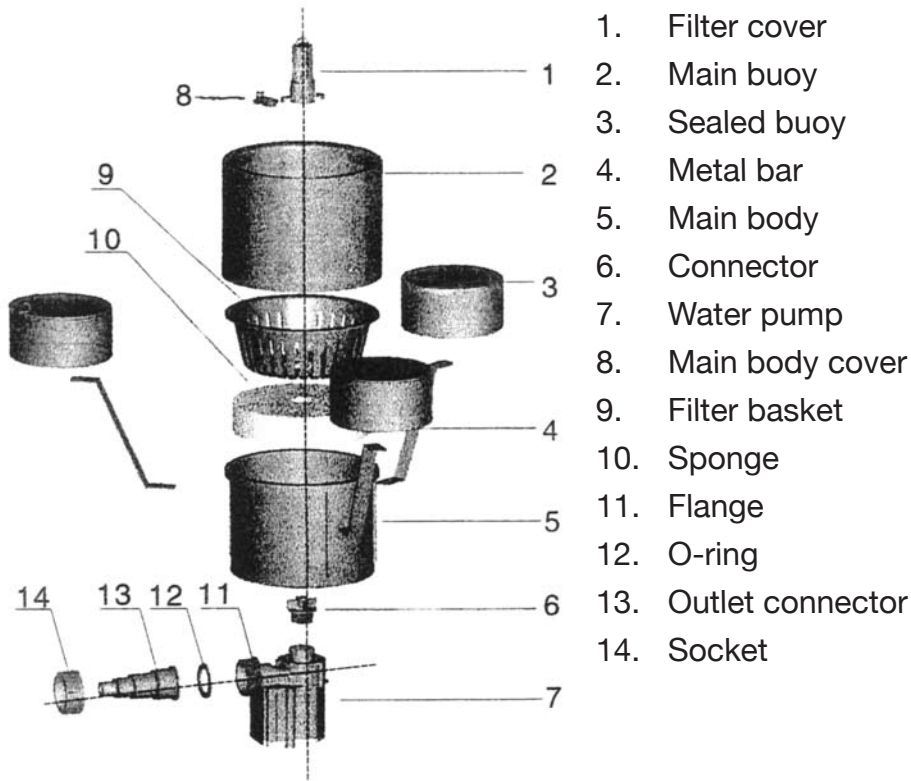
**NOTE: always disconnect from electrical outlet before handling the pump.**

1. Check the GFCI circuit breaker or try another GFCI electrical outlet to ensure the pump is getting power.
2. Check the filter cover and foam filter for blockage. Follow cleaning steps in the maintenance section if blockage is suspected.
3. If necessary, remove and clean the filter and or impeller assembly.

## Service and Maintenance

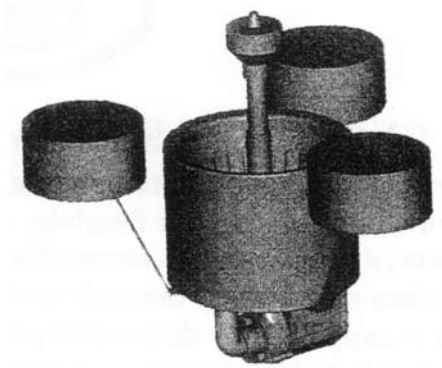
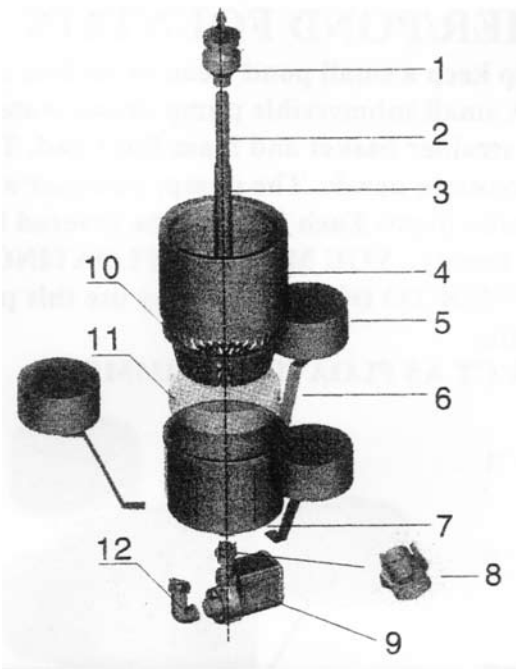
1. **Disconnect all power supplies before service.**
2. Clean the intake screen and foam filter when the flow is visibly reduced.
3. Clean the pump and impeller with clean fresh water.
4. When cleaning the pump and impeller, be careful not to loose the small plastic washers positioned at the top and bottom of the impeller. These washers are critical to the quiet and efficient operation of the pump.
5. Check inside the impeller housing for large debris or algae that could reduce the flow.
6. Clean the impeller housing using cotton swabs. Clean the outside of the impeller with a damp cloth and clean water.
7. Remove the filter pads and rinse out with clean water.
8. If the filter pads are deteriorated, discard and replace with new pads.

## Setting up to use as a floating skimmer:



Skimmer Assembled

## Setting up to use as a floating skimmer and fountain:



Skimmer/Fountain Assembled



3 Tier



Frothy



Waterbell



Champagne



Rocket

## **Warranty:**

This product is warranted against any mechanical or material defects for a period of one year from the date of purchase. Warranty only covers properly installed and maintained units.

The warranty does not cover normal wear and tear, nor any deterioration suffered through overloading, improper use, negligence or accident. Similarly, any modification made by the purchaser to the product will cause the warranty to be null and void.

All returned items will be inspected to determine cause of failure before warranty is approved.

Warranty does not cover any cost associated with the installation or removal of the product subject to warranty claim.

An RA number must be obtained by calling EasyPro Pond Products at 800-448-3873. It is your responsibility to pay the return shipping charges. Be sure to include the RA number, original receipt (in the form of an invoice or sales receipt), name, return address and phone number inside of the package. No warranty claims will be honored without the original receipt.

Ensure the product is properly packaged and insured for the replacement value. Damage due to improper packaging is the responsibility of the sender.

The manufacturer or supplier shall not be held liable for any damages caused by defective components or materials of this product; or for loss incurred because of the interruption of service; or any consequential/incidental damages and expenses arising from the production, sale, use or misuse of this product.

The manufacturer or supplier shall not be held liable for any loss of fish, plants or any other livestock as a result of any failure or defect of this product.

